







# Board of Directors

## Camp Thorpe Board Members

- Martha P. Heath, Co-President/Treasurer
- Lyle Jepson, Co-President/Secretary
- Richard Giard, Vice President
- Beth Giard
- Ralph Hathoway
- Dorinne Dorfman
- Ernest Miner
- Molly Heath
- Melody Frank
- Pamela Crino
- Roni Coleman

We are excited to welcome new board member, Dorinne Dorfman EdD , who brings a wealth of experience.

### Did you know?

Our Board members support camp in a wide variety of manners from volunteering during camp to assisting with the annual appeal to clean up days as well as guidance of our mission and strategic plan.

Left: Molly Heath demonstrates a science show at Camp this summer.



## The numbers please...

Another successful camping season

boasted the addition of 43 new campers hailing from two new states. Camp Thorpe had three, two week sessions followed by two, one week sessions this summer. We served 245 people with special needs in 2019.

Camp Thorpe received \$20,629 in scholarship funds! The other \$241,600 came from both families and ARIS funds. A significant number of our campers report being at or below Vermont's poverty line. Camp Thorpe prides itself on assisting in providing an excellent summer experience.

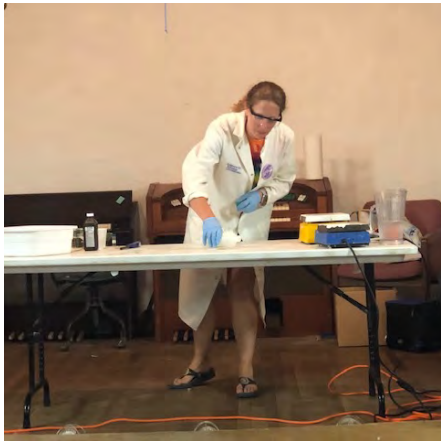
### Session Attendance:

- Session 1: 54
- Session 2: 57
- Session 3: 55
- Session 4a: 40
- Session 4b: 39

### Which States/Countries?

- Vermont: 193
- Connecticut: 3
- Maryland: 1
- Massachusetts: 6
- New Hampshire: 24
- New Jersey: 1
- New York: 14
- Rhode Island: 1
- Texas: 1
- Virginia: 2
- Montreal: 2
- California: 1

# Numbers





# Programming



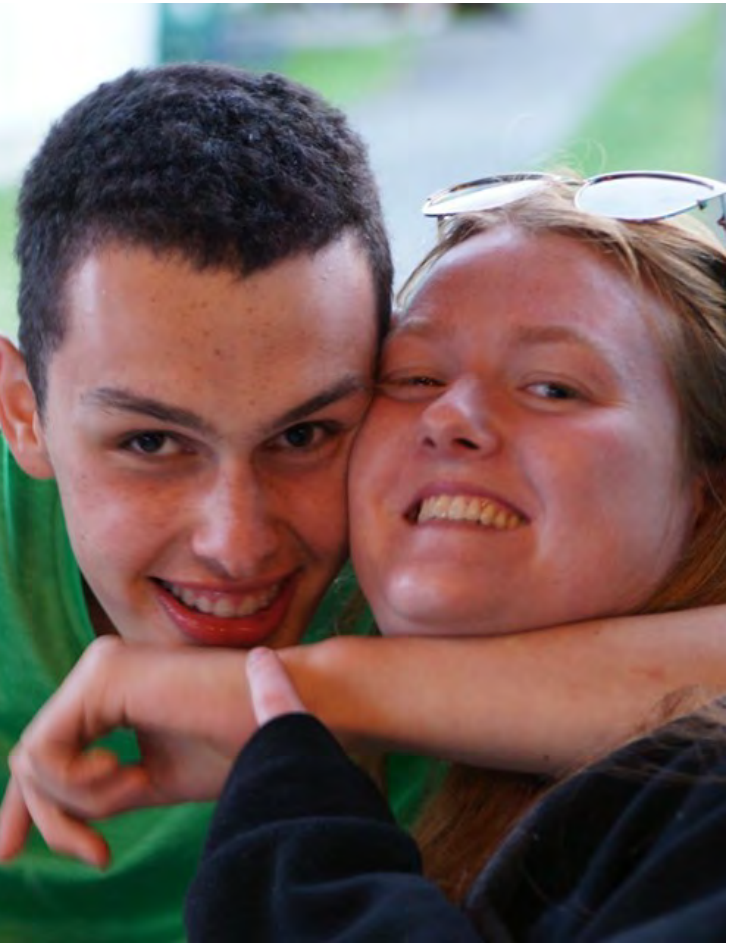
We challenge our campers to try new feats. For instance we had quite a few campers who performed on the stage for the first time. We work to creatively adapt programming to every skill level and meet individuals where they are.

Our theme days continued in 2019 with Disney Day, Luau, Dinosaur Day, Olympics and Science Day!

Our programming staff creating adaptive experiences in nature, arts and crafts, sports and music.

It is difficult to capture in words just how much joy is spread at Camp Thorpe each summer, but these photos will give you an idea.

**Our staff does a phenomenal job of embracing the day and providing campers with what they need. They also search for ways to make the most of the natural setting. Below a camper shows off a Monarch Caterpillar, one of dozens found by our Nature Area Leader.**



**Did you know?**  
**Did you know that Camp Thorpe boasts a state of the art zero-entry swimming pool? This means that the pool gently becomes deeper from each side--just inches at a time. No matter your swimming ability our pool is safe and fun!**







# Staff



Our staff hail from all around the world. They are students, teachers, counselors and nurses outside of the summer months. This year 24 staff members came from overseas: England, Ireland, Scotland, New Zealand and Australia.

We also employ a team of nurses and food service employees who enable us to serve a wide variety of needs and food restrictions.

Staff members often have qualifications far beyond a typical summer camp experience. Our Medical Director works as the Clinical Nurse Supervisor for the VNA. Our Assistant Directors both have a decade of experience working with individuals who have special needs in school settings. Many of our counselors have degrees or are working toward degrees in Social Work, Special Education and Psychology.

This year saw continued success in both strengthening the organization as well as in fundraising. Our total donations for the operating budget totaled in excess of \$160,000. Our contributors’ generosity allows us to keep tuition lower than would otherwise be possible.

As you can see from our below budget, we had a bang up year in terms of spending less and earning more than was budgeted.

Income	Oct '18-Sep 19	Budget	Over Budget
Total Camper Tuition	219,852.82	241,600	-21,747.18
Association Contributions	2,050.00	3000	-950.00
Corporate Contributions	3,967.00	3800	167.00
Designated Contributions	900.00	0	900.00
Individual Contributions	66,902.05	23,000	43,902.05
Memorial Gifts	26,974.68	21,600	5,374.68
Total Facilities Income	11,228	17,600	-6372
Total Grant Income	59,484.28	105,484	-45,999.72
Total Investment Accounts	110,393.34	102,100	8,293.34
Total Other Income	5,348.09	3,900	1,448.09
Total Scholarships	20,629.25	19,450	1,179.25
<b>Total Income</b>	<b>527,737.86</b>	<b>541,534.19</b>	<b>-13,796.33</b>
Expense			
Capital Expenditures	6,706.93	5700	1,006.93
B&G Contracted Services	32,548.43	32,500	48.43
Total General Maitenance	6,163.56	13,500.00	-7,336.44
Total Insurance and Taxes	41,333.51	44,350.00	-3,016.49
Total Rental House Expense	0.00	1500	-1,500.00
Total Utilities	9,589.16	12,191.00	-2,601.84
Total Building and Grounds	96,441.59	109,741	-13,299.41
Total Fundraising	45,764.84	47,263.00	-1,498.16
Total Misc Fees and Dues	831.39	650.00	181.39
Total Office Expenses	3,498.91	10,800.00	-7,301.09
Total Profession Services	18,126.48	17,850.00	276.48
Total Camper Misc	3,288.58	2,000	1,288.58
Total Dining and Kitchen	41,814.67	48,284.00	-6,469.33
Total Program Medical Supp	3,702.45	5,000.00	-1,297.55
Total Program Costs	53,147.44	60,534.19	-7,386.75
Staff Expense			0.00
Board of Trustees	806.71	500.00	306.71
Total Payroll Requirements	18,367.20	39,946.00	-21,578.80
Total Reimbursements	4,349.29	2,450.00	1,899.29
Pension	12,789.88	18,500.00	-5,710.12
Total Staff	245,994.64	242,400.00	3,594.64
Total Staff Recruiting	1,588.39	2,000.00	-411.61
Total Staff Supplemental Cc	4,529.63	7,400.00	-2,870.37
Total Other Income	596.83	0.00	596.83
Total Staff Expenses	275,991.54	294,696.00	-18,704.46
<b>Total Expense</b>	<b>493,802.19</b>	<b>541,534.19</b>	<b>-47,732.00</b>

# Fundraising and Financials







Camp Thorpe had much good news from 2019. Here are a sampling of the fruits of our labor:

#### **\$15,000 Grant from the State of Vermont**

This grant will allow us to replace all the doors and windows in the cabins on both sides of camp.

#### **Stream Lined Procedures and Data Collection**

We have worked out the kinks in our data entry programs and can now easily build capacity and efficiency as we move into our 93rd camping season.

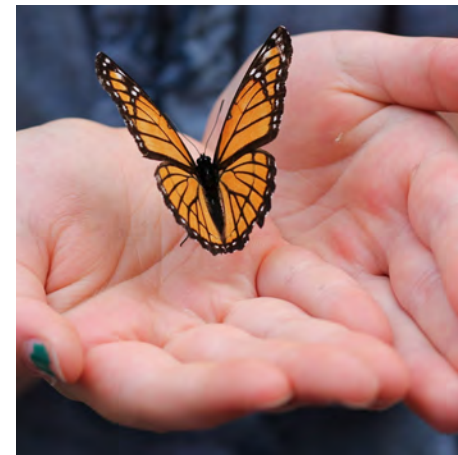
#### **Counselor Rentention**

We expect between 15 and 20 of our staff members to return next summer. This is due to a multi year process that examined and improved the counselor experience through thoughtful feedback and observation.

## Highlights



## Goals for 2020 and Beyond!



#### **AmeriCorps Grant**

Camp Thorpe has been successful in recieving an Americorps grant to hire up to two Vistas for the upcoming year.

#### **Increased Community Culltivation**

This Spring Camp Thorpe invited the community to a fishing derby at our little pond. This Fall Camp Thorpe threw a first ever Halloween Party to increase awareness of our mission and vision. Both events were attended by over 100 people!

#### **Mission and Vision Statements**

##### Vision:

Our vision is to create an intergenerational camp environment where everyone feels safe, secure and accepted.

##### Mission:

Camp Thorpe is dedicated to providing a fun and safe camping experience to children and adults with special needs.

#### **Heather Moore, New Executive Director**

Heather Moore was hired this past Spring and was trained by both Betsy Erwin (interim director) and Betsy Reid (interim development and strategy) in the past months.

Heather plans to build off of the excellent foundation created by a dedicated staff and board of trustees. Our goals for the following year build from our strategic plan and include:

**To Increase Community and Volunteer Involvement**

**To Continue Capacity and Efficiency Building**


**To friend and fundraise into the next generation of Camp Thorpe success.**

**To decrease the reliance on our investment accounts**

**To increase facilities use during off season through new partnerships**







# Camp Thorpe

P.O. Box 82, 680 Capen Hill Road, Brandon, VT 05733  
802-247-6611 | [www.campthorpe.org](http://www.campthorpe.org) | [director@campthorpe.org](mailto:director@campthorpe.org)

Camp Thorpe is a 501(c)(3) organization.  
All Donations are Tax Deductible

